

# Contracting Experience Information



Think Smart.  
World Wise.

## Project Management and Engineering Services

Prepared By

Robert N McCammon BEM MSSc  
Kilmurn

Date: March 2019

TYPE	CAPABILITY STATEMENT		
TITLE	COMPANY CAPABILITIES		
DATE	06/03/19	DOC. NO.	CA-028

# Contents



Introduction	3
Our Capability	4
Our Knowledge	5
Services	6
The Company Members	9
The Company Contractors	10
The Company Ethos	11
Certification	12

# Introduction

## Contact Details:

### Robert N McCammon

104 Old Coagh Road  
Cookstown  
Co, Tyrone  
N. Ireland  
BT80 8RQ

Tel: +44 (0) 28 8676 3184  
Fax: + (0) 970 7627515  
Mob: + (0) 7870165408  
E-mail:  
bob.mccammon@kilmurn.co.uk  
[www.kilmurn.co.uk](http://www.kilmurn.co.uk)

Kilmurn welcome's the opportunity to provide our Capability Statement, which aims to demonstrate the many tangible benefits that will accrue from engaging our services.

For over ten (17) years we have provided an extensive, independent range of experience and quality services to the international engineering and construction industry. As one of the fastest growing, globally aware and innovative industry service consultants, Kilmurn has completed commissions for projects in a wide range of sectors.

Effective from January 2011, in order to serve an increasing global demand Kilmurn entered into a number of service level agreements with internationally renown company's to ensure we provide a quality service to our clients .

## Why Kilmurn?

Kilmurn has a proven track record in the delivery of Project Management, Engineering and Construction Services.

We believe that the principle benefits and differentiation we offer include:

- **Experience** and knowledge gained from our previous and current contracts will be shared with your project; we will deliver innovation by developing new techniques and tailoring our existing services to meet the specific requirements of your project.
- **Commitment** to fulfilling the role, whatever is required, to your satisfaction.
- **Team** with significant and pertinent experience and a wealth of backup resources.
- **Innovative** approach and information technologies including Project Specific Management techniques to enhance our services.

As a Company, we remain flexible and responsive to our clients' needs. We are innovative in developing new services or tailoring our services to best complement our clients' specific project requirements.

The philosophy and culture of the company is one of best practice and commitment to quality, accuracy and timely project closeout.

# Our Capability

## Core Services:

- Project Management
- Project Engineering Studies
- Electrical Engineering
- Mechanical Engineering
- Civil Engineering Management
- Procurement
- Clients Representative
- Specialist Project Health and Safety
- Environment Project Management
- Engineering Support Services to the Power Industry

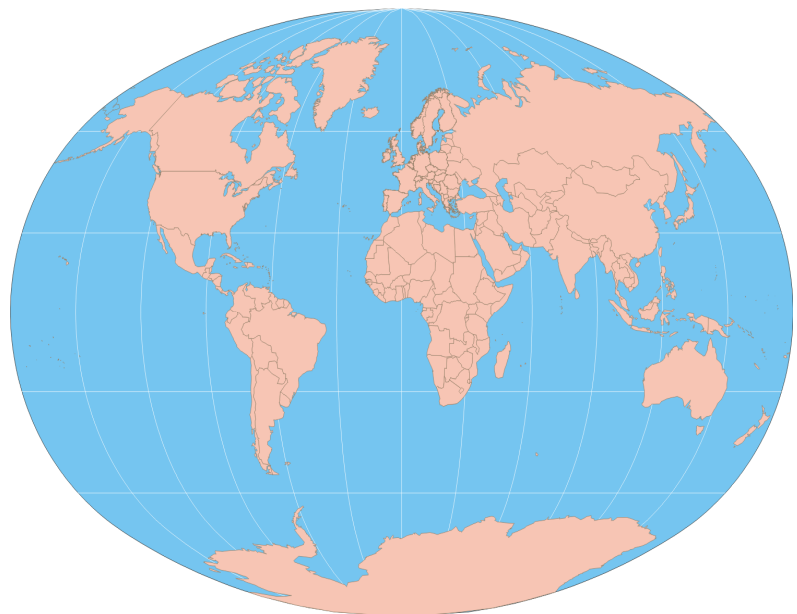
Established in 2002, Kilmurn is proud that we have the capability to offer Clients an international, multidisciplinary professional project management service with an engineering capability to undertake projects worldwide within the field of engineering and construction which includes renewable energy.

The Company is based primarily in Northern Ireland with worldwide contacts in USA, the UK, Africa and the Middle East.

The Company personnel can bring to a project over 25 years of industry-leading experience and knowledge.

Kilmurn are committed to the ongoing delivery of outstanding value-added project management and engineering services, which is based on a team of skilled professionals with a global insight that cannot be matched.

With a similar focus on excellence, we offer a perfect fit from both a corporate and cultural perspective.



# Our Knowledge



## Sharing Our Knowledge

One of the key benefits of our experience is that all knowledge gained on past and current projects is shared with your current project. This approach allows us to collate benchmark and analyse. For example, we have developed a number of in-house technologies that are specific to Project Management and Engineering Projects.

These current technologies relate to capital works planning, project installation costing, operation and maintenance costing, risk management, engineering condition assessments, data collection for asset registers, asset replacement valuations and the like.

We put great store in sharing this technology with our clients as we are extremely aware of the benefits information gained from one assignment can have for other Asset Management purposes.

## **Kilmurn Accreditation**

When a client engages Kilmurn they are doing so in the knowledge that they are engaging a Company that are ISO1800-1 accredited, full members of the Association of Project Management (APM) and hold full accreditation to the International Institute of Risk and Safety Management (IIRSM).

All Kilmurn personnel are professionally trained and are accredited to their respective professional and engineering bodies.

# Services

## Sector Knowledge:

- Commercial
- Education
- Energy
- Renewable Energy
- Health Care
- Heritage
- Hotels & Resorts
- Industrial
- Infrastructure
- Residential
- Retail
- Specialist Roof Installation
- Steel Erection
- Steel Portal Buildings
- Modular Buildings
- Plant Erection
- Plant De-construction

## Services

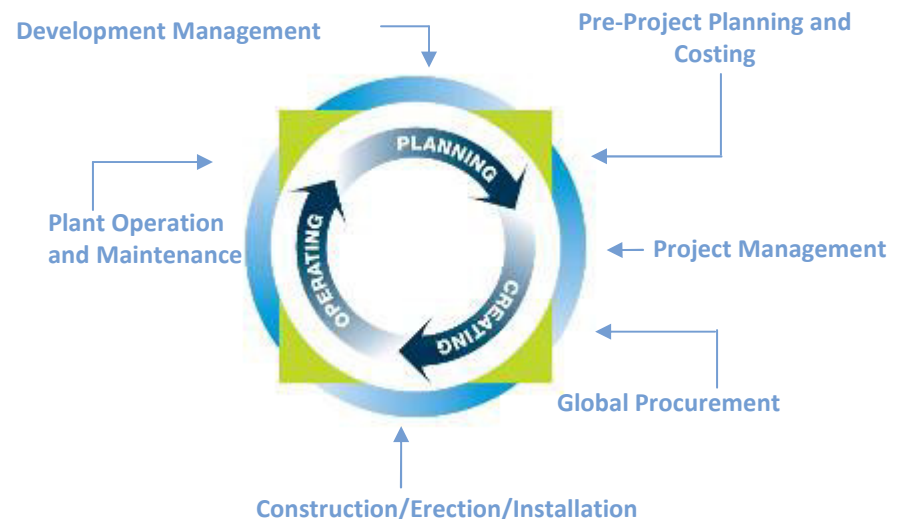
Kilmurn is a diverse, multi-disciplined international Project Management and Engineering Service Provider.

We offer a wide variety of specialist professional services from pre-construction through to completion, advice on operations and maintenance through to disposal.

The Kilmurn Management Team understands that the needs of every project differ, as do each client's desired outcomes. Your project may benefit from one or several of our services.

We operate within six key engineering and construction industry disciplines:

## Property Life Cycle



# Services



## Strategic Project Planning

Kilmurn have improved the Strategic Planning Process for a clients' potential project.

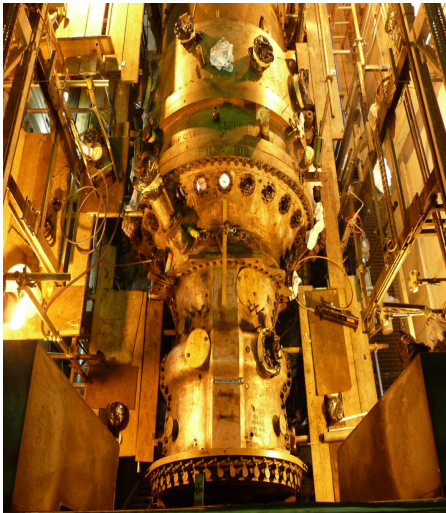
By applying effective life-cycle techniques and demonstrated practices specific to the clients' needs, we provide services that assist in reducing procurement and construction of your project.

The review and planning process includes developing:

- **Pre-Project Plans** – to establish a short and long term strategic plan that effectively aligns all project cycle costs to your organisation's capital spending plan. The plans will include design, procurement plan, initial construction plan, operations and maintenance plan, disposal plan and capital works budget plan.
- **Outsourcing Strategies** – development of outsourcing strategies and services including preparation of tender and contract documents, tender evaluation and negotiation.
- **Equipment Review** – equipment and maintenance management reviews to compare the proposed equipment and plant against world standards. The review identifies improvement in the area of information systems, maintenance planning, assets strategies, policies and procedures.
- **Risk Management Plans** - operational risk assessment and development of operational Risk Management Plans. The assessment also covers plant and equipment pre-purchase reviews and identification of risks and costs prior to purchase.
- **Specification and Tender Documentation** – develop tender specification documents for long term maintenance management and operational services, co-ordinate tendering process, assist during the evaluation, selection and transition processes.
- **Design Review** – for a both new and re-conditioned plant and equipment, we perform design reviews at the concept design, schematic design and detailed design stages to ensure that the future operation of the development performs efficiently



# Services



- **Ongoing Construction Reviews** – review and development of Construction Management plan including optimal strategy to deliver services and contracting staff, resource planning and the like.
- **Policy and Procedures** - the development of detailed guidelines to assist the client to complete the transition from construction to operation.
- **Maintenance Plans** – for preventative maintenance and capital work plans including maintenance frequency and resource requirements.
- **Asset Registers** – development of equipment asset register in a hierarchical asset identification structure for efficient management and consolidated reporting.
- **Condition Assessment** – undertake plant and equipment condition audits based on the functionality, criticality and utilisation of assets and the development of realistic maintenance plans.
- Review and assessment of plant and equipment risks associated with compliance with past and current legislative requirements.
- **Management of the Project** – we provide custom specific management support for the construction/erection of the project from analysis and design, through to implementation and support.
- **Construction/Erection Engineering Services** – the Company has the ability to offer a client the full range of engineering services required to construct and commission a plant, these include:
  - **Total Project Management**
  - **Civil Engineering and Ground works**
  - **Electrical and Instrumentation Engineering**
  - **Mechanical Engineering**
  - **Planned Maintenance Support**
  - **Engineering Support Services**



# Company & Projects

Engineering refers to the practice of organising the design and construction [and, I would add operation] of any artifice which transforms the physical world around us to meet some recognised need.

## Kilmurn Professional Project Solutions Ltd

As a firm, in delivering the very best service to our clients, we aim to be at the forefront of Professional Project Management Solutions and Developments.

### **Aug 2017 to July 2018**

Kilmurn were awarded the Project Management and Mechanical Installation of an 18mw Power Plant in Denmark for a leading internet provider.

### **Jan: 2015 to July 2015**

Kilmurn were awarded the Project Management Contact By WElink Energy for the construction of a 38.5mw Solar Power Plant in Raventhorpe North East England.

### **Dec: 2014 to Feb: 2015**

Kilmurn awarded the Project Management for the installation 2 x wind turbines by Lifelong Energy in Northern Ireland.

### **Oct: 2013 to Present**

Kilmurn awarded the 20 month project management support contract by BWSC of Denmark for the construction of a new Biomass Power Plant in Northern Ireland.

### **June 2008 to 2011**

Kilmurn were awarded the contract to supply Construction Design and Management Consultancy, HSE Project Management for the Combined Heat and Power Plant (CHP) at Lisburn N. Ireland by ContourGlobal this plant was installed within the New Coca Cola Site.

### **July 2007 to 2010**

Kilmurn were awarded the 20 month contact for the Construction Design and Management, Project Health and Safety Management for the Disassembly of the Milford Haven Petrol Refinery in Wales (UK) by Bosicor Oil Pakistan Ltd (BOPL).

# Company & Projects

*Companies  
that we have  
worked with  
and can bring  
to the Project  
if Required.*

## Baumgarte Boilers Systems

You're looking for a new concept for your power supply? A turnkey plant with a technical solution tailored to your requirements? Efficient, resource-conserving and environmentally compatible? Developed and implemented by a partner that stands for experience, reliability and adherence to schedules and deadlines? Then Standardkessel Baumgarte is exactly the right contact for you

[www.baumgarte.com](http://www.baumgarte.com)

## FINNING /CATERPILLAR

Finning is the world's largest Caterpillar dealer delivering unrivalled service for over 80 years. We sell, rent and provide parts and service for equipment and engines to customers in various industries, including mining, construction, petroleum, forestry and a wide range of power systems applications.

Finning employs over 12,000 people world-wide and operates in three geographies, with the head office in Vancouver, Canada.

<https://www.finning.com/en>

## WElink Energy Group

WElink Energy is a specialist sourcing and distribution company with extensive experience of doing business in Asia.

They offer a range of services including sourcing, engineering, quality control, supply chain & logistics, project management and marketing.

[www.welink.eu](http://www.welink.eu)

# Company & Projects



## Our Team

At Kilmurn and throughout the Company we are proud of the skills, talents and experience of the entire Management and Staff.

We are regarded as a highly professional international team; each member of the Company is an expert in within their own specialist field, be that project management, engineering installation, construction and erection.

Our expertise spans the full spectrum of the power, civil, electrical and mechanical engineering industry.

Our directors take personal responsibility for management of all projects undertaken. Our Asset Management group is led by director Alan Martin whose individual property experience is vast in both the Public and Private sectors.

Our team incorporates strategic Project Management, Engineering deliverability and data management. This mix is needed to ensure the collation and analysis of information in a format used for the development of the Project.

We will be pleased to provide Curriculum Vitae for the key members of the Asset Management team who can assist you on your project.

# Certification



## Company Information

### Our Structure:

Kilmurn is a Limited Company with Robert N McCammon as Managing Director. Our head office is located in Cookstown N. Ireland with the Engineering office based in Belfast.

All Company projects are controlled from the Belfast Offices which are located 10 minutes from Belfast City Airport.

### Health, Safety and Quality Assurance:

Kilmurn's Project Management Department has full accreditation.

### Construction and Engineering Accreditation

The Company Members are certified within their own specialist field

By engaging the Company, our clients can enjoy the benefits of the initiatives that are innovative and cost effective, tailored specifically to their developments.

We have experience on the installation of various mechanical systems such as open closed power generation equipment, tri-generation, diesel and gas powered power plants, wind turbines and solar.

The Company is fully committed to implementing environmental friendly initiatives and we encourage our employees to do so by demonstrating that on all projects undertaken.